



## Support Groups for Grieving People

---

### FALL 2018

*The Bereavement Groups are for anyone who lives or works in Montgomery County who is grieving the death of a loved one. The groups provide emotional support and encourage the sharing of personal experiences. Practical issues and concerns are discussed. Educational materials are provided.*

**Evening Grief Support Group:** for anyone grieving the death of a loved one.

Mondays from 6:30-8:00 pm

Montgomery Hospice, 1355 Piccard Dr., Rockville, MD 20850

**Begins Monday September 24, 2018 for six weeks.**

**Afternoon Grief Support Group:** for anyone grieving the death of a loved one.

Tuesdays from 1:30-3:00 pm

Trinity Lutheran Church, 11200 Old Georgetown Rd., N. Bethesda 20852

**Begins Tuesday, September 25, 2018 for six weeks.**

**Parent Loss Group:** for adults who have experienced the death of one or both parents.

Thursdays from 6:30-8:00 pm

Hughes United Methodist Church, 10700 Georgia Ave., Wheaton, MD 20902

**Begins Thursday, September 27, 2018 for six weeks.**

**Child, Adolescent and Teenager Grief Support Group:** for children kindergarten through 12th grade who have experienced the death of a parent or sibling.

**Parent/Guardian Group** meets at the same time.

Wednesdays from 6:00-7:30 pm

Montgomery Hospice, 1355 Piccard Dr., Rockville, MD 20850

**Begins Wednesday, September 26, 2018 for five weeks.**

**Pre-Registration required:**

- Registration is first-come, first-serve basis, so register early.
- Groups are limited to 11 persons and they do fill up.
- We ask that you wait 3 months after the death to participate in a support group.
- \$25 non-refundable registration fee for community persons; no registration fee for Montgomery Hospice family members.
- To register: ask for a Bereavement Counselor at 301-921-4400

Montgomery  
HOSPICE

[www.montgomeryhospice.org](http://www.montgomeryhospice.org)  
301-921-4400

---

Montgomery Hospice



***Winter Blues:  
Balancing Sorrow and Celebration  
While Grieving***

---

**Wednesday, November 28, 2018**

**6:30 – 8 p.m.  
and**

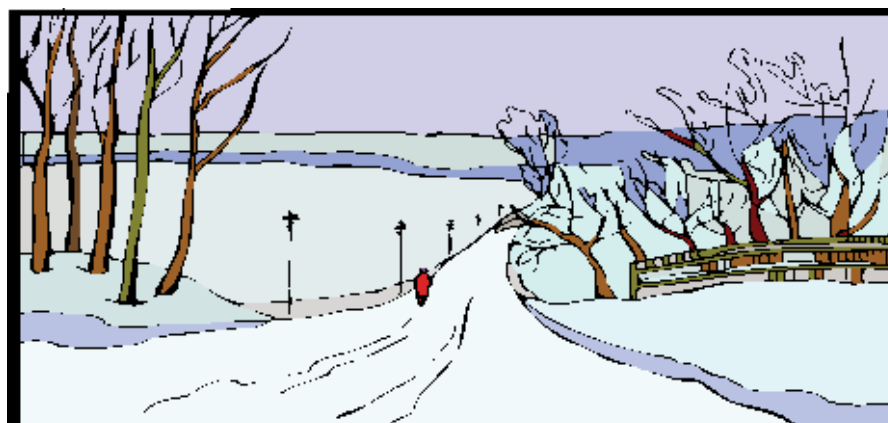
**Monday, December 10, 2018**

**1:00 – 2:30 p.m**

Location:

Montgomery Hospice Office

1355 Piccard Drive, Suite 100, Rockville, MD 20850



To register or for more information,  
call the Montgomery Hospice  
Bereavement Care Team.  
301-921-4400

Free and open to any  
Montgomery County resident.

**Montgomery  
HOSPICE**

[www.montgomeryhospice.org](http://www.montgomeryhospice.org)  
301-921-4400

---

Montgomery Hospice

# ***Drop-In Discussions about Grief and Healing***

---



*If you are mourning the death of a loved one..... join us for one of these small group discussions about grief and healing:*

**Wednesday, December 5, 2018**

**6:30 – 8:00 p.m.**

**and**

**Thursday, January 3, 2019**

**1:00 – 2:30 p.m.**

Location: Montgomery Hospice Offices  
1355 Piccard Drive, Suite 100  
Rockville, Maryland 20850



For additional information and registration, please call:  
Montgomery Hospice Bereavement Care Team at 301-921-4400

All sessions are free and open to any  
Montgomery County resident.

**Montgomery  
HOSPICE**

[www.montgomeryhospice.org](http://www.montgomeryhospice.org)  
301-921-4400